

Bumper Cover Installation Instructions DG830-S **'03-up Dodge Ram Truck 1500 & 2500**

YOU MUST PRE-FIT THE BUMPER COVER BEFORE PAINTING. Warranty is void if Bumper Cover is not prefitted to factory bumper before painting and permanently installing.

Tools needed: T30 Torx Bit, power drill, 15/64" drill bit, 10 mm socket, ratchet and short extension, stanley knife or tin snips, small clamp; optional: one caulk tube of silicone adhesive

BEFORE PAINTING – FIT BUMPER COVER AS FOLLOWS:

1. Remove the factory Air Dam by removing the five 10 mm hex bolts; discard the bolts and Air Dam.
2. Using the T30 Torx Bit and remove the two torx head bolts at each end of the factory painted upper bumper cover; save these bolts.
3. Using a stanley knife or tin snips, trim away approximately ¼" of material from under the bottom edge of the factory upper bumper cover on each side at the area where the cover curves into the center bumper opening. See Fig. A. This will allow clearance for the upper edge of the TMD Bumper Cover to slide up into this area. It is necessary to gently pull or pry out on the factory upper bumper cover to trim it.

NOTE 1: If you have a factory front license plate holder it will have to be removed. If you need to reinstall the holder, it is necessary to trim it to fit over the TMD Bumper Cover.

4. To check final fit before painting, slide the upper lip of the TMD Bumper Cover under the lower edge of the factory upper bumper cover. Position the TMD Bumper Cover so that both ends are equally wrapped around the bumper ends. Remove and paint TMD Bumper Cover.

NOTE 2: IF YOUR TRUCK HAS FACTORY DRIVING LIGHTS IN THE BUMPER, REMOVE THE PLASTIC CONES IN FRONT OF THE LIGHTS AND DISCARD.

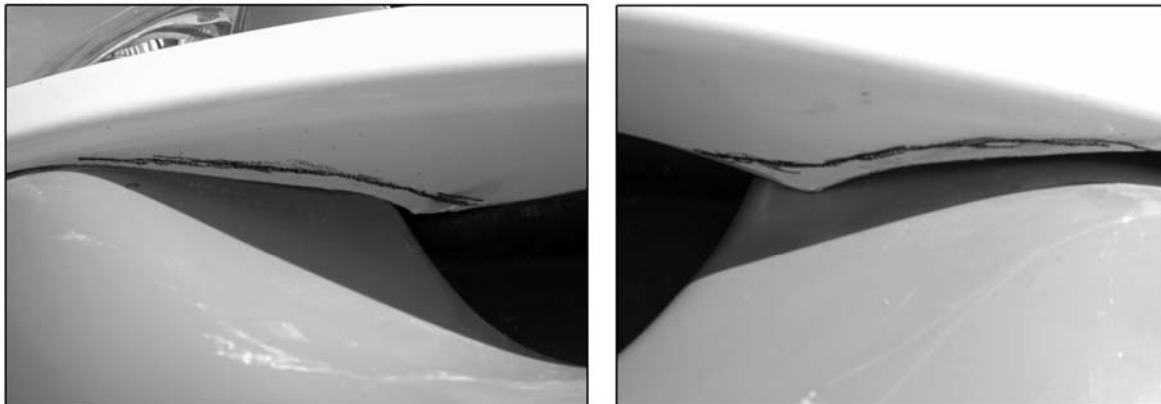
TO INSTALL BUMPER COVER ONCE PAINTED:

5. Slide the upper lip of the TMD Bumper Cover under the lower edge of the factory upper bumper cover. Position the TMD Bumper Cover so that both ends are equally wrapped around the bumper ends. Carefully lift up on one side of the factory upper bumper cover and clamp that side of the TMD Bumper Cover in place. Make sure to clamp the upper flat lip of the TMD Bumper Cover to the flat surface of the metal bumper.
6. Drill three 15/64" holes into the steel bumper on one side using the three pre-drilled holes as a guide.
7. Insert three of the supplied black xmas tree fasteners into the holes. Push them in firmly. Repeat these steps on the opposite side.
8. Re-install the factory torx head bolts into the upper bumper cover.

OPTIONAL:

You can run a bead of silicone adhesive (available from a hardware store) about one inch inboard of the center section of the upper edge of the TMD Bumper Cover at the time of installation.

Fig. A



Trim away approx. 1/4" of material from under the bottom edge of the factory upper bumper cover on each side at the area where the cover curves into the center bumper opening. Black lines in photos shows area that will be trimmed away.